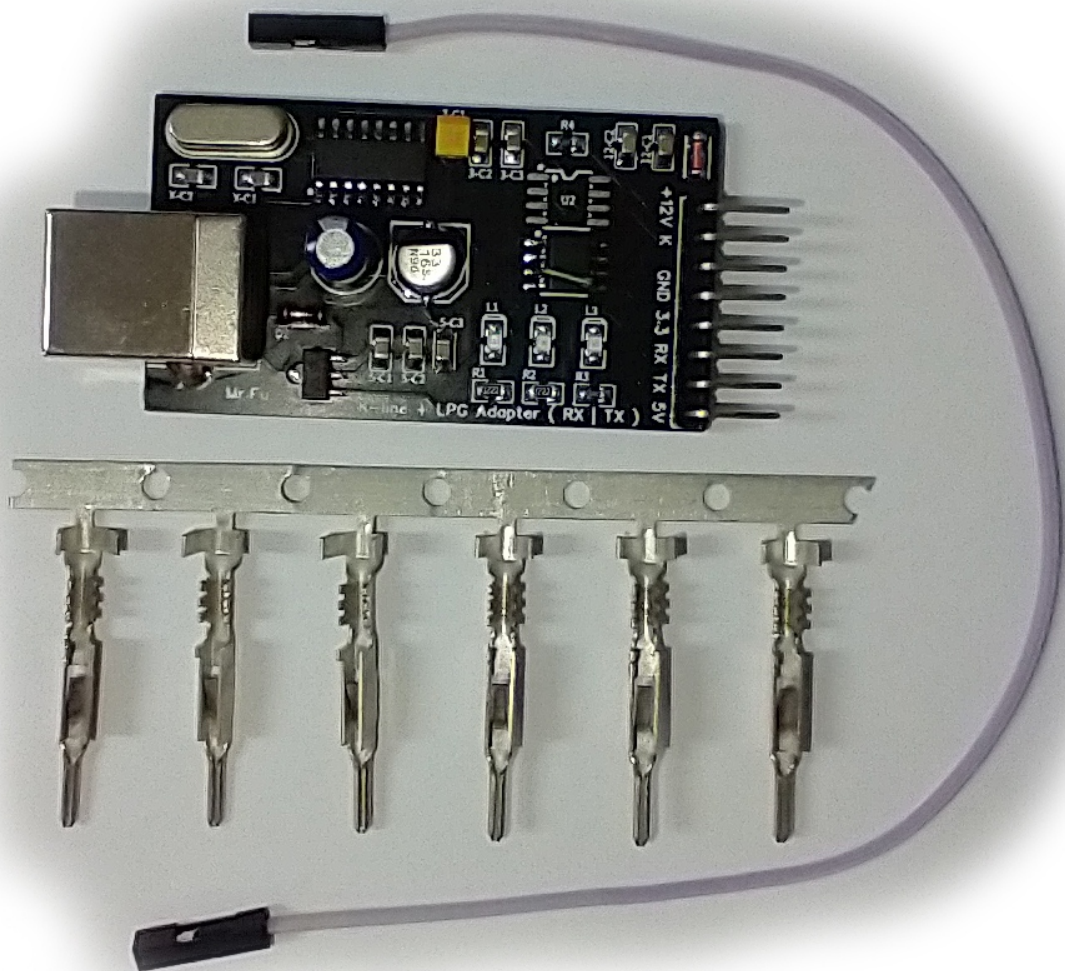
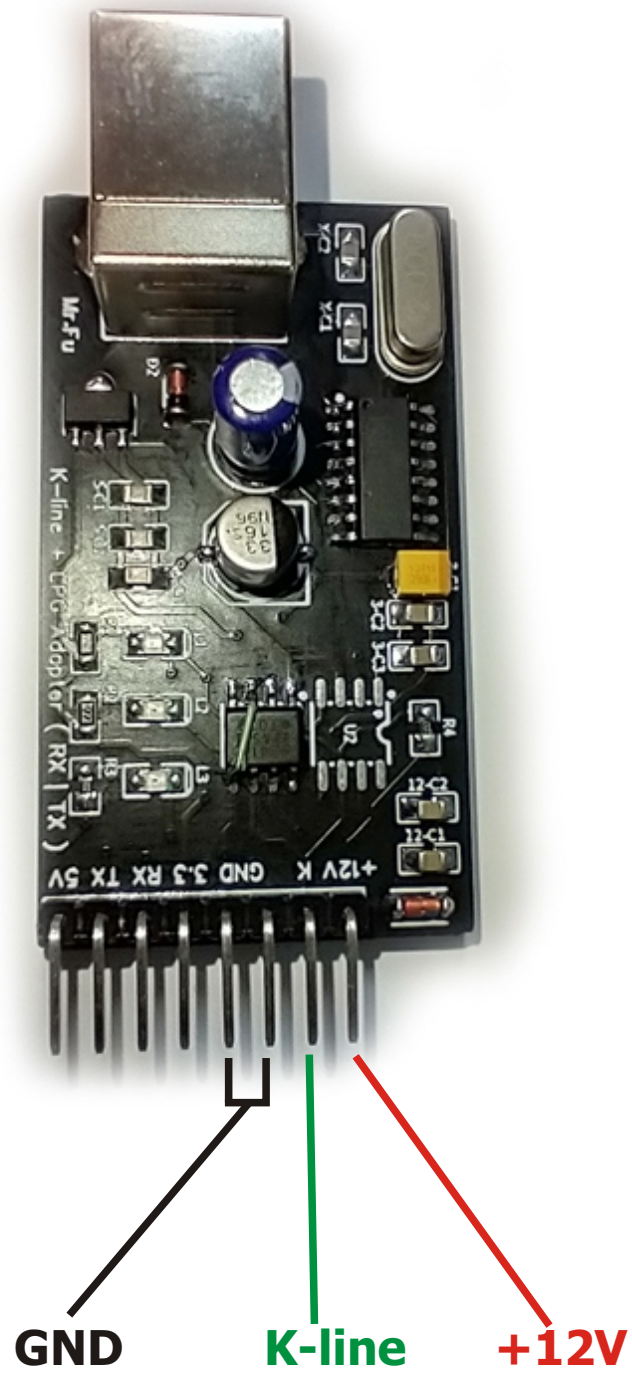


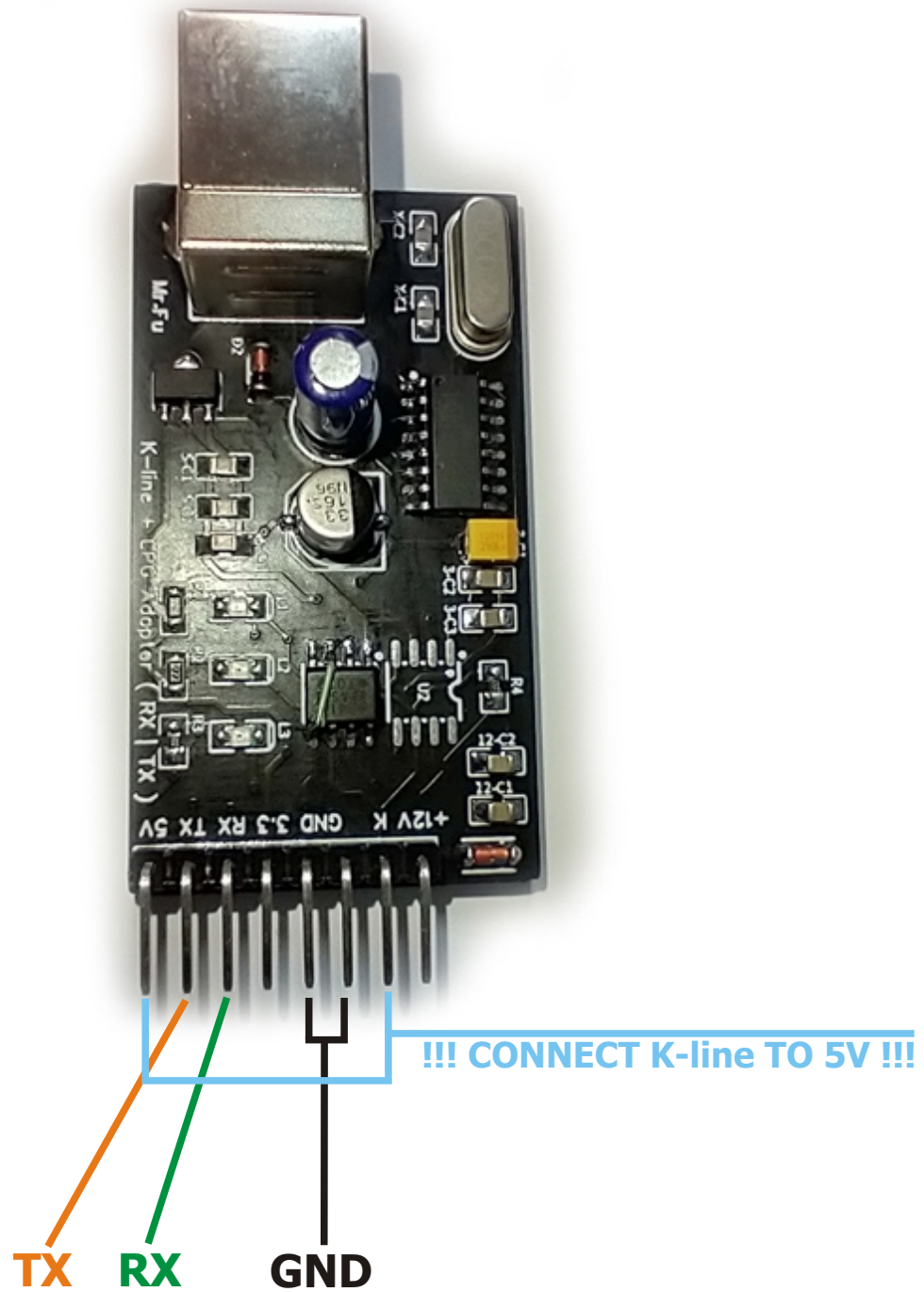
# K-line Adapter LPG Adapter UART/USART Adapter/Programmer



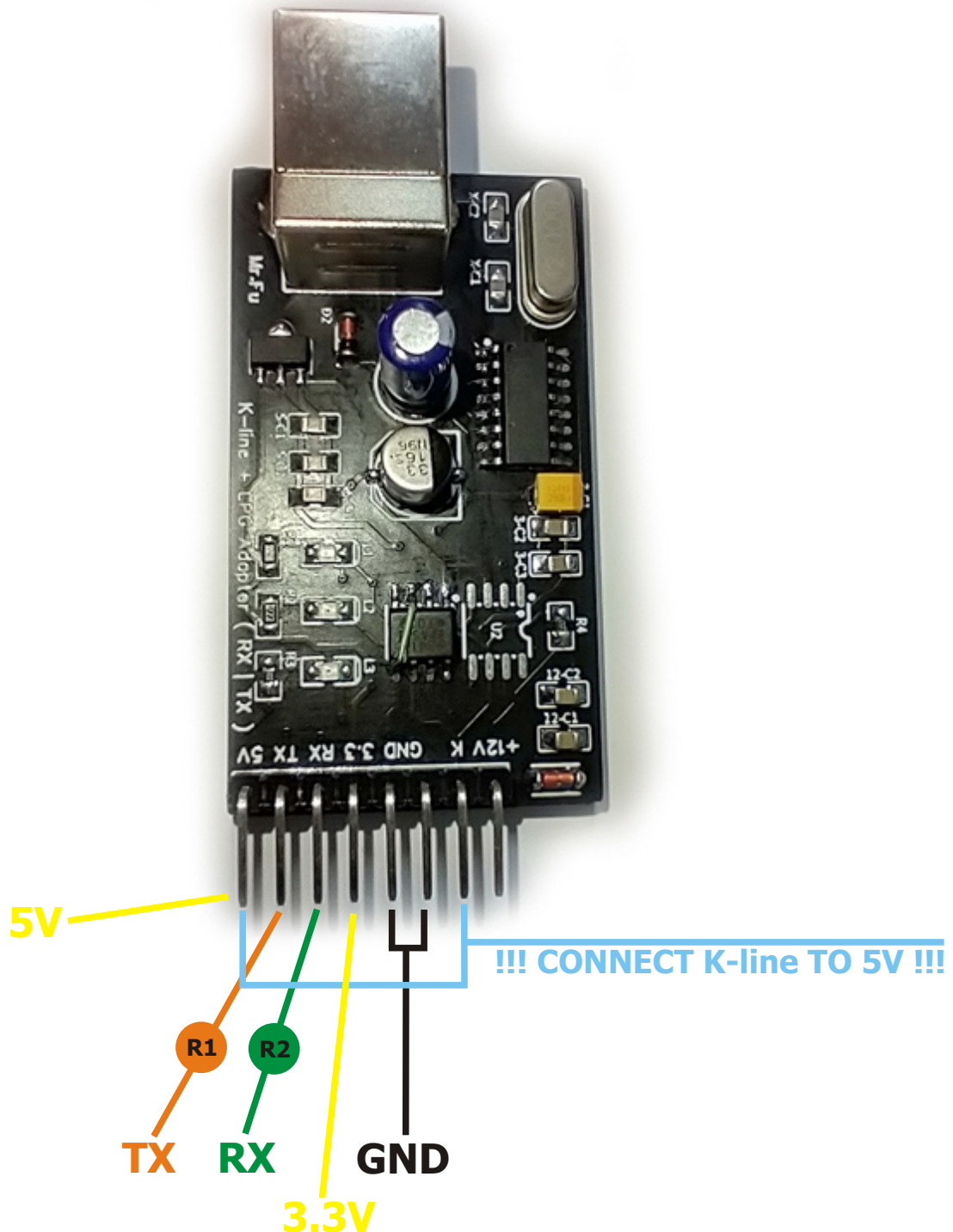
# K-line



# LPG



# RX/TX , USART/UART

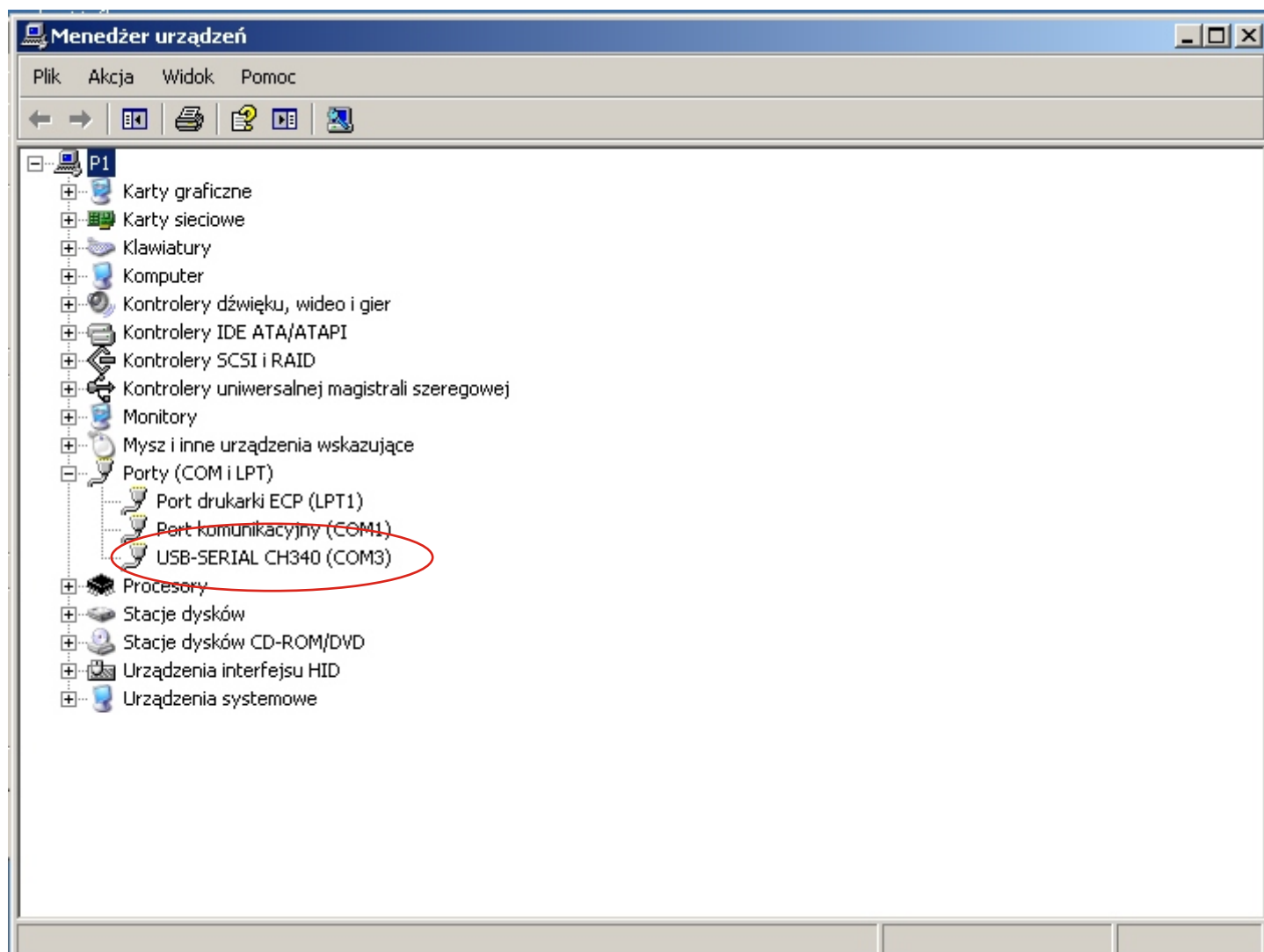


**R1 & R2 use resistors ( 1 kOhm or 2 kOhm)**

**for programming MCU:  
if MCU work on 3.3 V use 3.3V PIN  
if MCU work on 5 V use 5V PIN**

# Drivers

Nazwa	↑ Roz.	Wielkość	Czas	Atryb
[..]		<DIR>	2019-12-11 01:45	-a--
[CH341SER]		<DIR>	2019-12-10 12:30	-a--
[INSTALL]		<DIR>	2019-12-10 12:30	-a--





# Drivers

